



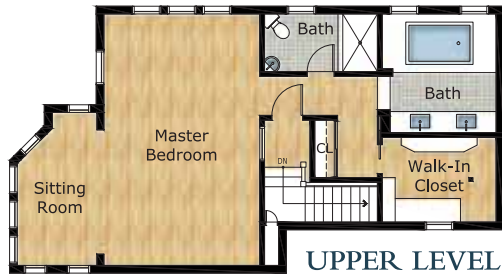
Exclusively offered by:
Andrew Herrera II
 Berkshire Hathaway HomeServices'
 Top Producing Agent
 (415) 564-9777

CalDRE # 01199229

Andrew@AndrewHerrera.com
 www.AndrewHerrera.com



MAIN LEVEL



UPPER LEVEL



LOWER LEVEL

©2026 BHH Affiliates, LLC. An independently owned and operated franchisee of BHH Affiliates, LLC. Berkshire Hathaway HomeServices and the Berkshire Hathaway HomeServices symbol are registered service marks of Columbia Insurance Company, a Berkshire Hathaway affiliate. Equal Housing Opportunity. 🏠

Andrew Herrera II presents...



210 Lansdale Avenue
 -SHERWOOD FOREST-

BERKSHIRE HATHAWAY HOMESERVICES | FRANCISCAN PROPERTIES | SAN FRANCISCO, CA



Sherwood Forest Phenomenal English Cotswold Panoramic Pacific Ocean View Home!

This extraordinary English Cotswold home, built in 1935, with sweeping Pacific Ocean views is proudly perched atop an impressive, quarter-acre corner lot in the heart of the neighborhood, close to public transportation! An inviting, gated storybook garden entrance with walkways, boxwood hedges and lush, mature plants and trees leads to an enchanting veranda with gabled roof, corbels, copper gutters, decorative timbers, plantation shutters and stonework. The arched entry with gorgeous, original front door opens into a hotel-like, double foyer with convenient powder room, coat closets, telephone booth, built-in linen closets, laundry chute and a handsome open-banister staircase with leaded glass window. The grand formal living room, featuring a magnificent, barrel-vaulted ceiling boasts a classic wood-burning fireplace with original stone surround, built-in curio cabinet, gleaming parquet hardwood floors and large picture windows offering stunning views from the Olympic Club, Harding Park and Lake Merced to the Pacific Ocean, Farallon Islands, Marin Headlands and Sutro Tower. The adjacent lanai/terrace with exceptional views includes a wide, stone staircase that descends to the picturesque, paradisiacal garden. The remarkable, banquet-sized formal dining room with built-in buffet, arched mirror, multi-layered crown moldings and striking chandelier is perfect for entertaining! The beautifully remodeled gourmet kitchen with enormous, adjacent breakfast room and nice work island showcases a gas range cooktop with griddle and hood, separate built-in double oven, refrigerator, dishwasher, microwave, trash compactor, rich tile counters, pass-through with wet bar, marvelous custom wood cabinets and walk-in pantry.



Two spacious bedrooms – both with amazing ocean views and big closets, one with walk-out balcony – and a vintage checkerboard tiled Jack & Jill bath with recessed Art Deco ceiling, pedestal sink, walk-in shower and cast-iron tub end this floor. The luxurious, upper-level master suite with 180-degree panoramic Pacific Ocean views features a sumptuous bedroom, sitting room, splendid marble tile bath with dual vanity sinks and jetted tub, an ancillary bath with water closet, sink, and shower, and a fabulous walk-in closet with built-in custom organizers. A staircase with theater wall lights descends from the foyer to the lower-level living space. This floor includes two good-sized bedrooms, both with huge closets, a third full bath with pedestal sink, shower, tub and separate water closet, a gigantic family/media room with access to a walk-out terrace that opens to the yard, a step-up wine cellar, second powder room and a massive laundry/hobby room with washer & dryer, double cast-iron utility sink and built-in ironing board. The spectacular, park-like landscaped backyard with tradesman's entrance, wrap-around walking paths, patios, terraces and sensational garden with flourishing plants and trees completes this truly special home!

Features

- ◆ 5 large bedrooms
- ◆ 3 full baths
- ◆ 2 half baths
- ◆ Lobby-like foyer, center hall
- ◆ Grand formal living room
- ◆ Banquet-sized formal dining room
- ◆ Wood-burning fireplace
- ◆ Parquet hardwood floors
- ◆ Panoramic Pacific Ocean views
- ◆ Gourmet kitchen, work island, wet bar
- ◆ Enormous breakfast room
- ◆ Lanai/solarium
- ◆ Gigantic family room
- ◆ Laundry/hobby room, washer & dryer
- ◆ Wine cellar
- ◆ Ample storage
- ◆ Wrap-around, park-like landscaped grounds
- ◆ 2-car side-by-side parking garage

Offered at \$3,295,000

