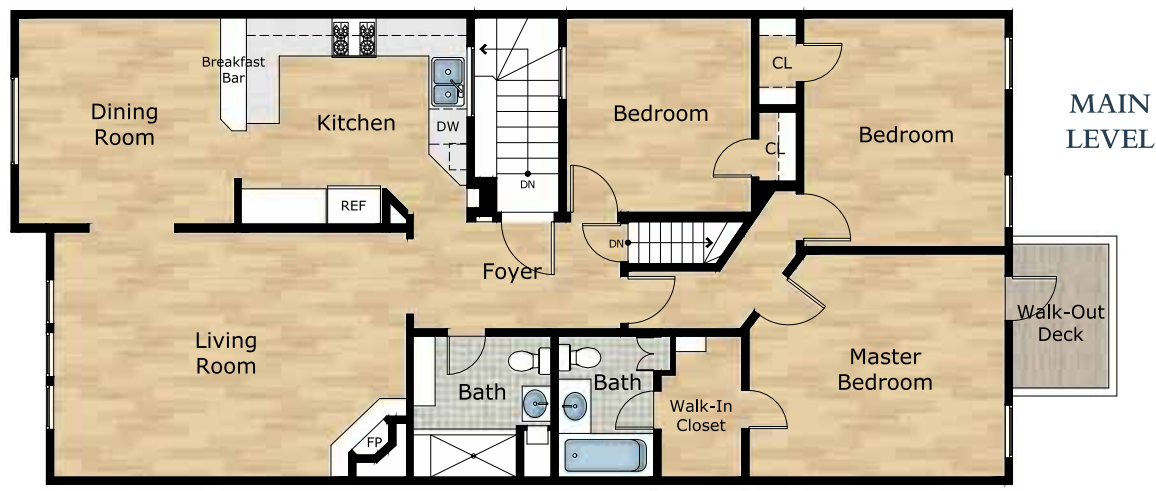


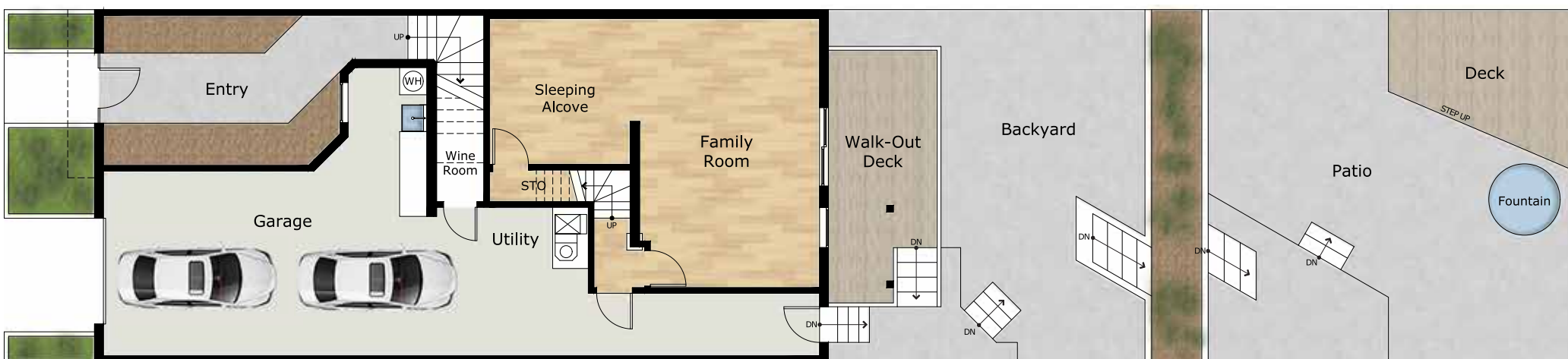


Exclusively offered by:
Andrew Herrera II
 Berkshire Hathaway HomeServices
 Top Producing Agent
(415) 564-9777
 CalBRE # 01199229
 Andrew@AndrewHerrera.com
 www.AndrewHerrera.com



LOWER LEVEL

BERKSHIRE HATHAWAY
 HomeServices
 LUXURY
Collection
 677 Portola Drive
 San Francisco, CA 94127



©2021 BHH Affiliates, LLC. An independently owned and operated franchisee of BHH Affiliates, LLC. Berkshire Hathaway HomeServices and the Berkshire Hathaway HomeServices symbol are registered service marks of Columbia Insurance Company, a Berkshire Hathaway affiliate. Equal Housing Opportunity.

Andrew Herrera II presents...



1972 10th Avenue
 - GOLDEN GATE HEIGHTS -



Golden Gate Heights Spectacular Traditional View Home!

This exquisite Traditional sweeping view home built in 1941 is tucked away on a wonderful block in the heart of the neighborhood, close to public transportation and J.P. Murphy Park! The inviting garden and gated tunnel entrance with terrazzo staircase leads to the notable four-paneled glass front door and into a delightful foyer with center hall floor plan. The magnificent formal living room boasts a corner gas fireplace with gorgeous original mantel, large picture window, recessed lighting and gleaming hardwood floors. The open-arched dining room with striking light fixture is perfect for entertaining! The beautifully remodeled gourmet kitchen with huge skylight showcases all stainless steel appliances including a Jenn-Air five-burner gas range with hood, Jenn-Air refrigerator and Bosch dishwasher, granite counters, custom cabinets with pull-out drawers and lazy Susan, pantry and convenient broom closet. A gracious hallway leads to the home's private living quarters.



The stunning master bedroom suite with walk-out deck and panoramic views from the treetops of Golden Gate Park and the Ferris Wheel to sweeping views of the Bay and Angel Island to Mount Sutro and Twin Peaks features a big walk-in closet and a fantastic remodeled bath with designer tile, shower over tub, heated floors and a romantic skylight. Two additional good-size bedrooms and a second remodeled full bath end this floor. The lower level enjoys an amazing family room with sleeping alcove and direct access to a terrific walk-out deck that opens to the outdoors. The sensational park-like landscaped backyard with working fountain, patio, deck, magical hidden garden and a variety of colorful plants and trees completes this truly special home!

Main Features

- ◆ 3 bedrooms
- ◆ 2 remodeled full baths
- ◆ Formal living room
- ◆ Gas fireplace
- ◆ Dining area
- ◆ Gourmet kitchen
- ◆ Breakfast counter
- ◆ Hardwood floors
- ◆ Family room
- ◆ Sleeping alcove
- ◆ Sweeping Bay views
- ◆ 2 walk-out decks
- ◆ Park-like landscaped backyard
- ◆ Patio, working fountain
- ◆ Wine room
- ◆ Laundry area
- ◆ Ample built-in storage
- ◆ 2 car parking garage

Offered at \$1,595,000

