



Exclusively offered by:

**Andrew Herrera II**

Berkshire Hathaway HomeServices

Top Producing Agent

(415) 564-9777

CalBRE # 01199229

Andrew@AndrewHerrera.com

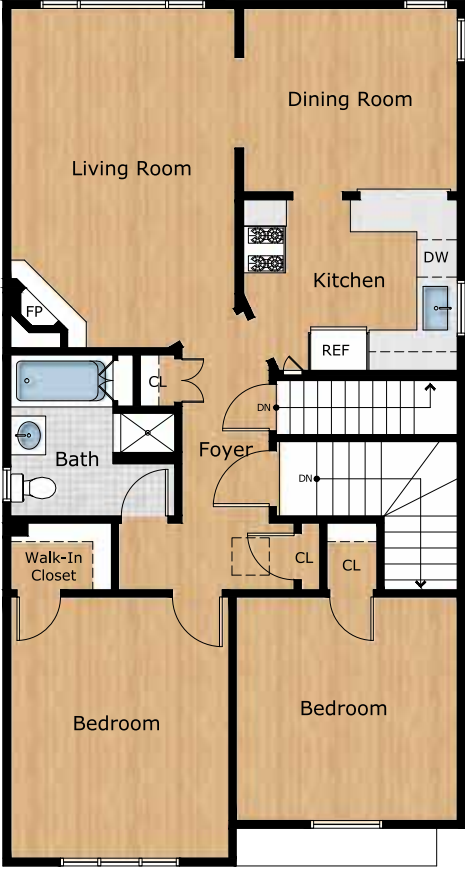
**www.AndrewHerrera.com**



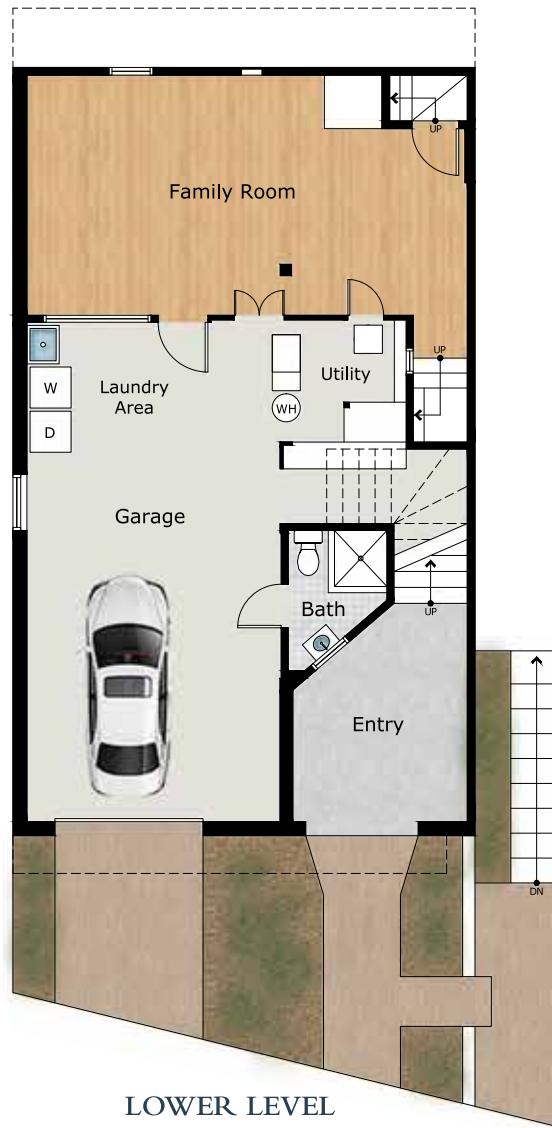
BERKSHIRE HATHAWAY  
HomeServices

LUXURY  
*Collection*<sup>SM</sup>

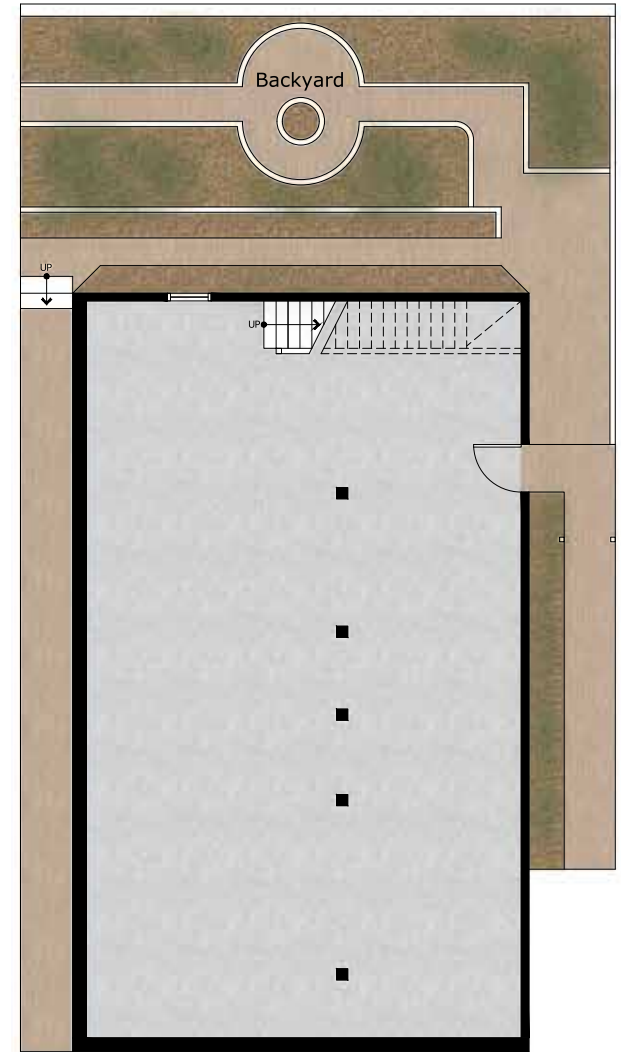
677 Portola Drive  
San Francisco, CA 94127



MAIN LEVEL



LOWER LEVEL



SUB-LEVEL BASEMENT

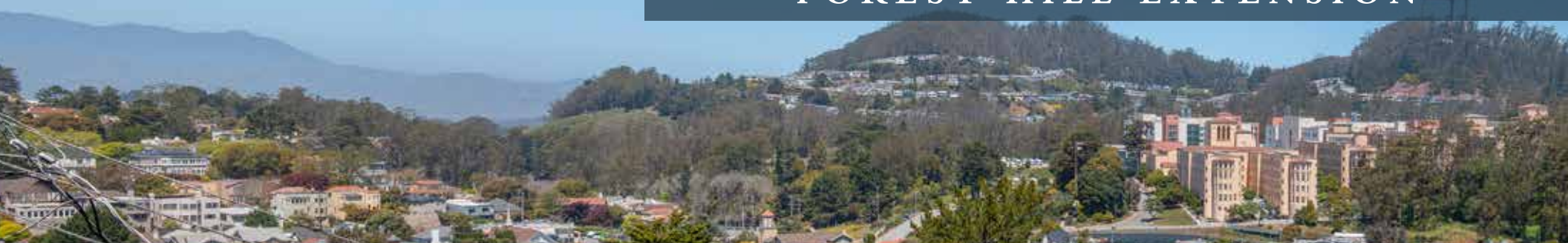
©2021 BHH Affiliates, LLC. An independently owned and operated franchise of BHH Affiliates, LLC. Berkshire Hathaway HomeServices and the Berkshire Hathaway HomeServices symbol are registered service marks of Columbia Insurance Company, a Berkshire Hathaway affiliate. Equal Housing Opportunity.

Andrew Herrera II presents...



62 Rockwood Court

-FOREST HILL EXTENSION-





*Forest Hill Extension Classic Traditional View Home!*

This spectacular Traditional view home built in 1941 is gently tucked away on Rockridge Terrace, a wonderful cul-de-sac close to shops, restaurants and Forest Hill Muni Station! An exquisite garden walkway leads to an arched tunnel entrance with brick staircase, up to the notable front door and into a gracious center hall foyer with skylight and convenient coat closet. The magnificent formal living room with sweeping views from the Marin Headlands, Mount Tamalpais and the Golden Gate Strait to Sutro Tower, Twin Peaks and Mount Diablo boasts a handsome wood-burning fireplace with period mantel and brick surround, "Art Deco" moldings, designer wall sconces and newly refinished hardwood floors. The delightful formal dining room with striking light fixture and amazing views is perfect for entertaining!



The terrific updated gourmet kitchen features all stainless steel appliances including a gas range and microwave, custom cabinets with pantry and slow-close drawers, black quartz counters and a handy breakfast bar with pass-through. Two good-size bedrooms and a full bath with separate shower and tub end this floor. The lower level includes a spacious family room with paneled walls, a second full bath and laundry area with utility sink. The enormous sub-level basement has tremendous storage and endless possibilities for potential development. The pleasant backyard with tradesman's entrance, walking path and mature yucca palm tree completes this truly special home!

*Main Features*

- ◆ 2 bedrooms
- ◆ 2 full baths
- ◆ Formal living room
- ◆ Wood-burning fireplace
- ◆ Formal dining room
- ◆ Sweeping views
- ◆ Remodeled kitchen
- ◆ Breakfast bar
- ◆ Hardwood floors
- ◆ Family room
- ◆ Laundry area
- ◆ Ample storage
- ◆ Landscaped backyard
- ◆ Large parking garage



*Offered at \$1,395,000*