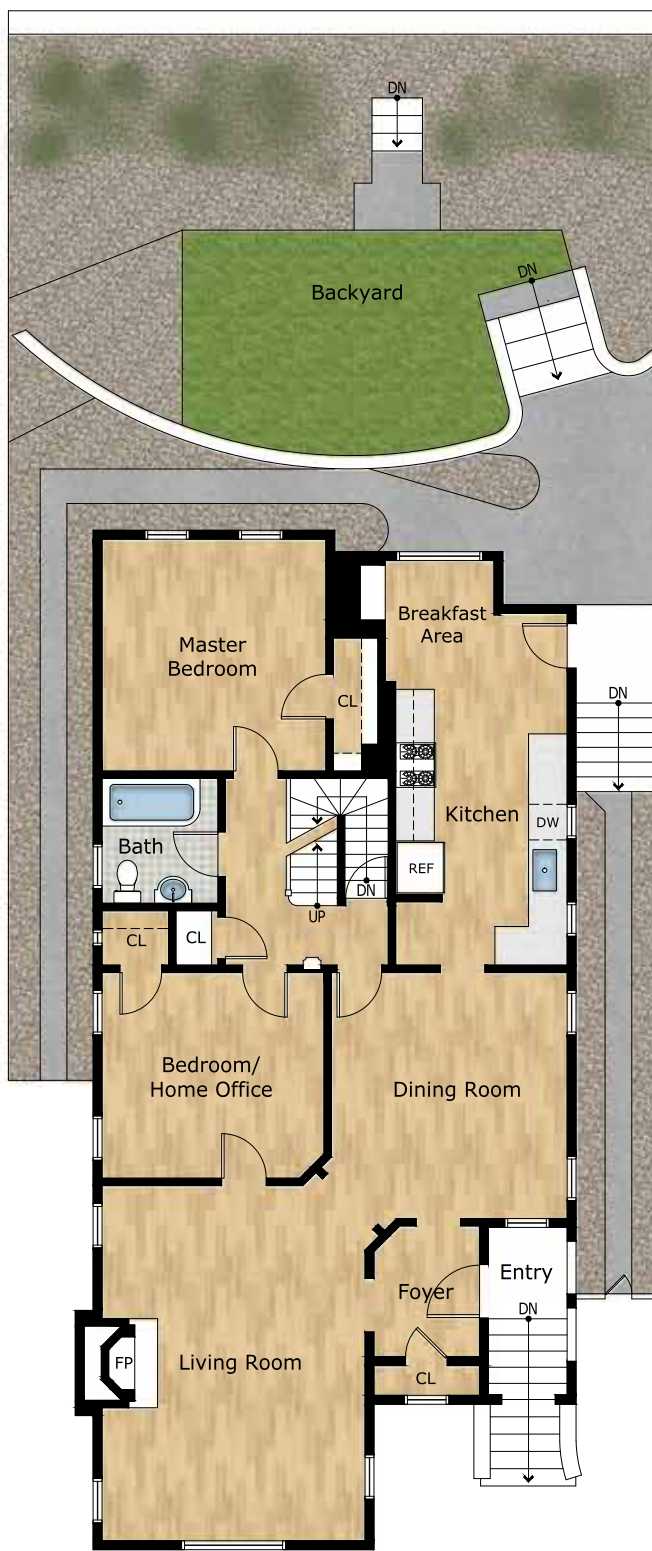
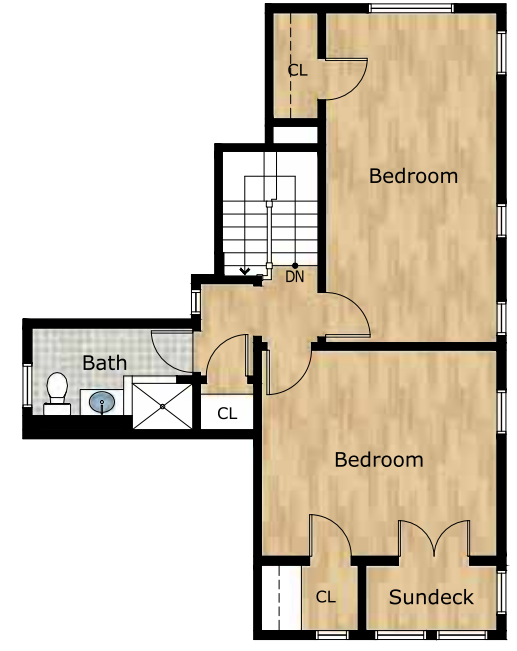




LOWER LEVEL



MAIN LEVEL



UPPER LEVEL



Exclusively offered by:

Andrew Herrera II

Berkshire Hathaway HomeServices'

Top Producing Agent

(415) 564-9777

CalBRE # 01199229

Andrew@AndrewHerrera.com

www.AndrewHerrera.com

©2022 BHH Affiliates, LLC. An independently owned and operated franchise of BHH Affiliates, LLC. Berkshire Hathaway HomeServices and the Berkshire Hathaway HomeServices symbol are registered service marks of Columbia Insurance Company, a Berkshire Hathaway affiliate. Equal Housing Opportunity.

BERKSHIRE HATHAWAY HomeServices

LUXURY Collection

677 Portola Drive
San Francisco, CA 94127

Andrew Herrera II presents...



9 Miraloma Drive

- MIRALOMA PARK -



Miraloma Park Classic Mediterranean View Home!

This handsome Traditional Mediterranean two-story view home built in 1926 is conveniently located close to West Portal Village shops, restaurants and Muni Station! A wonderful garden entrance with inviting walkway and brick staircase leads to a charming open-air vestibule with notable original front door and into a gracious foyer with entry coat closet. The magnificent formal living room with vaulted barrel ceiling boasts a wood-burning fireplace with impressive mantel, dramatic 30-paned arched picture window with views to Edgehill Mountain, exquisite light fixture, attractive moldings and gleaming hardwood floors. The stately, banquet-size formal dining room with striking chandelier is perfect for entertaining! The spacious, updated light-filled kitchen with separate breakfast area, built-in china hutch and recessed lighting showcases all stainless-steel appliances including a four-burner gas-stove with griddle, refrigerator and dishwasher, Carrara quartz counters and custom painted wood cabinets with snazzy hardware. The master bedroom with garden views, a second good-size bedroom/home office and a vintage tile bath with shower over cast iron tub end this floor.



An outstanding open-banister Craftsman staircase ascends to the upper level landing with linen closet, two additional bedrooms, a step-out sundeck and a second full bath with large walk-in shower. The huge basement level includes a laundry area with washer, dryer and utility sink, ample storage with built-in shelves and a two car tandem parking garage. The fabulous park-like landscaped backyard with tradesman's entrance, walking path, stone walls, sweeping lawn and colorful garden with mature plants and trees completes this truly special home!

Main Features

- ◆ 4 bedrooms
- ◆ 2 full baths
- ◆ Formal living room
- ◆ Formal dining room
- ◆ Wood-burning fireplace
- ◆ Hardwood floors
- ◆ Enormous arched picture window
- ◆ Views to Edgehill Mountain
- ◆ Updated kitchen
- ◆ Breakfast area
- ◆ Built-in china hutch
- ◆ Step-out sundeck
- ◆ Laundry area with washer & dryer
- ◆ Ample storage with built-in shelves
- ◆ Park-like landscaped backyard
- ◆ 2 car tandem parking garage

Offered at \$1,695,000

