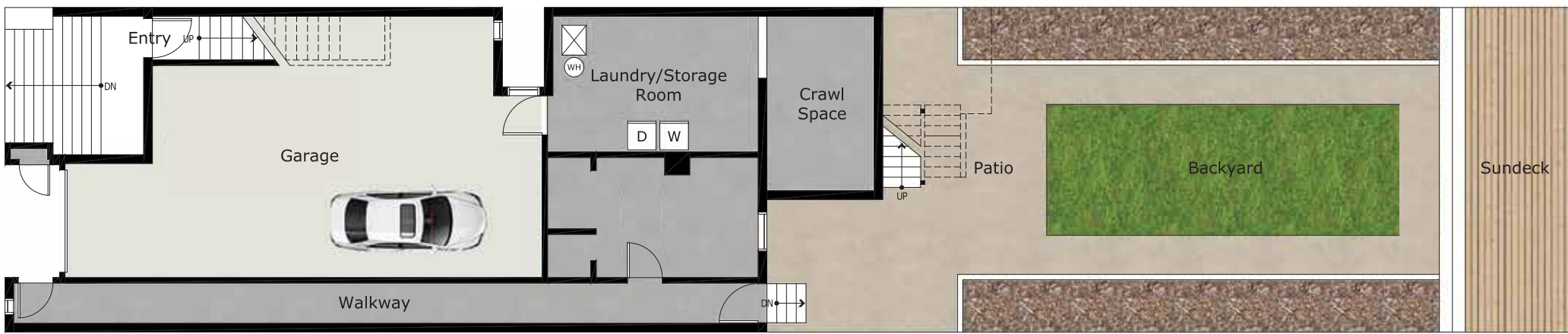
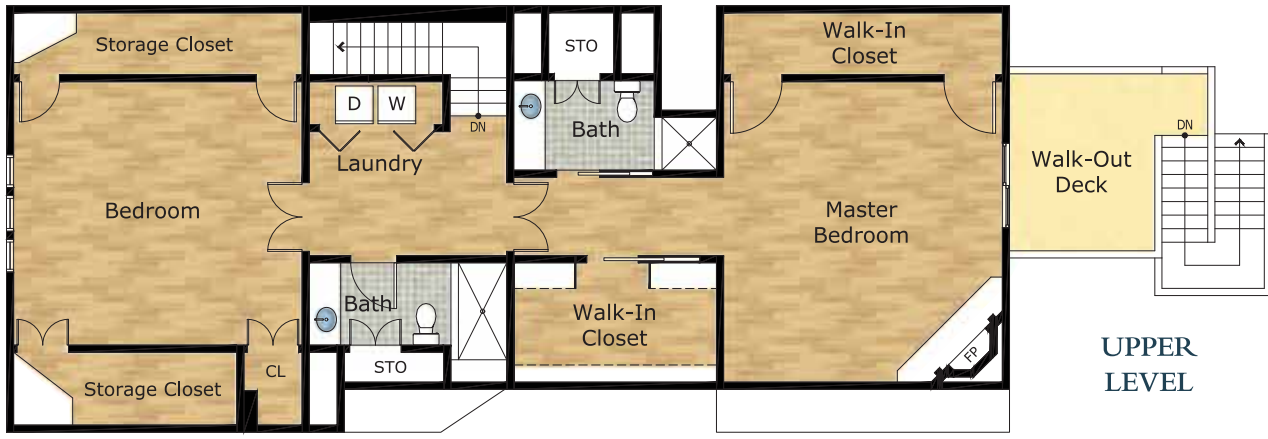




Exclusively offered by:
Andrew Herrera II
 Berkshire Hathaway HomeServices'
 Top Producing Agent
 (415) 564-9777
 CalBRE # 01199229
 Andrew@AndrewHerrera.com
 www.AndrewHerrera.com



©2023 BHH Affiliates, LLC. An independently owned and operated franchisee of BHH Affiliates, LLC. Berkshire Hathaway HomeServices and the Berkshire Hathaway HomeServices symbol are registered service marks of Columbia Insurance Company, a Berkshire Hathaway affiliate. Equal Housing Opportunity.

BERKSHIRE HATHAWAY
 HomeServices
 LUXURY
Collection
 677 Portola Drive
 San Francisco, CA 94127

Andrew Herrera II presents...

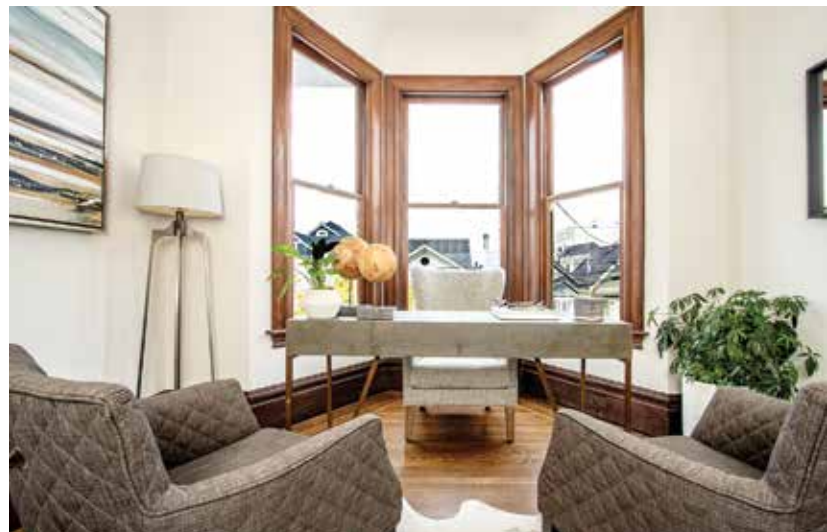


120 Second Avenue -LAKE DISTRICT-



Spectacular Two-Story Victorian Penthouse Condominium!

This magnificent remodeled two-story top floor Victorian penthouse with exquisite architectural detail built in 1890 is tucked away on a wonderful tree-lined block in the heart of Lake District! A classic terrazzo staircase leads to an arched entry with a notable front door and into an expansive foyer with handsome wainscoting and open banister. The impressive formal living room with adjacent cocktail lounge – which enjoys pocket doors for privacy – boasts a distinguished wood-burning fireplace with elegant mantel and marble surround, built-in bookshelves and cabinets, corner closet, bay window and gleaming hardwood floors. The remarkable banquet-size formal dining room with splendid woodwork, second classic wood-burning fireplace, gorgeous built-in buffet, striking light-fixture and views to the garden is perfect for entertaining! The outstanding remodeled gourmet kitchen with breakfast bar and adjacent family room with walk-out deck that leads to the garden showcases all stainless-steel appliances including a Viking Professional six-burner gas range with hood, Dacor oven and microwave, Sub-Zero refrigerator and KitchenAid dishwasher, recessed lighting, work-peninsula with pendant lights, granite counters with tile backsplash, custom cabinets and walk-in pantry. Two good-size bedrooms and a fabulous remodeled full bath with shower over tub end this floor.



The extraordinary open-banister staircase with enormous skylight ascends to the upper level landing and the home's private living quarters. The phenomenal master suite with double doors and vaulted open-beam ceiling features a marble tile bath with walk-in shower, huge walk-in closet, corner gas fireplace, four skylights and a sliding glass door that opens to a terrific walk-out deck overlooking the garden. A spacious, light-filled fourth bedroom with vaulted open-beam ceiling, skylights, multiple built-in closets and panoramic views to the Pacific Ocean and a large convenient laundry area end this floor. The beautiful, park-like level landscaped backyard with sweeping lush lawn, patio with wrap-around brick walkway, sundeck and flowerbeds with colorful plants and trees completes this truly special home!

Main Features

- ◆ 4 bedrooms
- ◆ 3 full baths
- ◆ Formal living room
- ◆ Cocktail lounge
- ◆ Banquet-size formal dining room
- ◆ 3 fireplaces
- ◆ Gourmet kitchen
- ◆ Breakfast bar
- ◆ Family room
- ◆ Hardwood floors
- ◆ Recessed lighting
- ◆ Multiple skylights
- ◆ Sweeping Pacific Ocean views
- ◆ In-unit laundry, washer & dryer
- ◆ Large storage room
- ◆ Park-like landscaped backyard
- ◆ Parking garage

Offered at \$2,495,000

