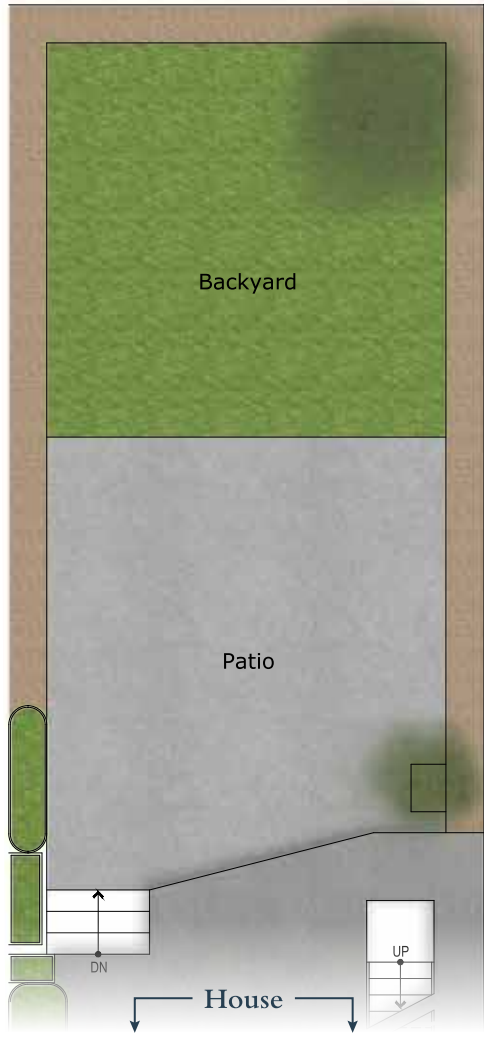


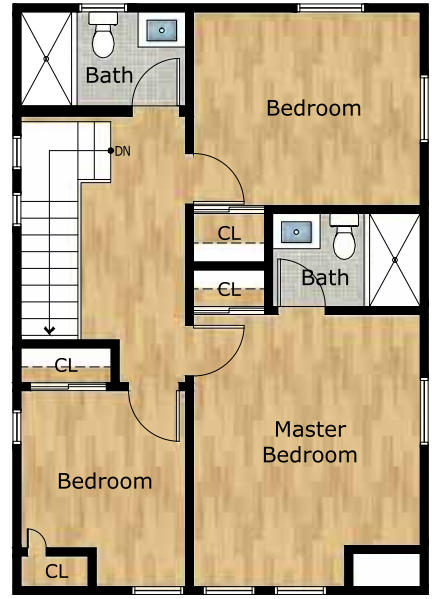
LOWER LEVEL (HOME)



LOWER LEVEL (YARD)



MAIN LEVEL



UPPER LEVEL



Exclusively offered by:
Andrew Herrera II
 Berkshire Hathaway HomeServices'
 Top Producing Agent
 (415) 564-9777
 CalBRE # 01199229
 Andrew@AndrewHerrera.com
 www.AndrewHerrera.com

©2022 BHH Affiliates, LLC. An independently owned and operated franchise of BHH Affiliates, LLC. Berkshire Hathaway HomeServices and the Berkshire Hathaway HomeServices symbol are registered service marks of Columbia Insurance Company, a Berkshire Hathaway affiliate. Equal Housing Opportunity.

BERKSHIRE HATHAWAY
 HomeServices
 LUXURY
Collection
 677 Portola Drive
 San Francisco, CA 94127

Andrew Herrera II presents...



2023 18th Avenue
 - INNER PARKSIDE -





Inner Parkside Charming Craftsman Colonial View Home!

This splendid remodeled Craftsman Colonial Revival view home built in 1938 is nestled on a wonderful tree-lined block in the heart of the neighborhood! An inviting brick staircase leads to a spacious, unique columned veranda with notable front door and into a large foyer with center hall floor plan. The magnificent formal living room boasts a gas fireplace with classic mantel and stone surround, recessed lighting, plantation shutters, built-in speakers and gleaming hardwood floors. The comfortable formal dining room with striking chandelier and sliding glass door that opens to a nice walk-out deck is perfect for entertaining! The beautifully designed gourmet kitchen with huge walk-in pantry showcases all stainless-steel appliances including an LG five-burner gas range, Samsung refrigerator and GE dishwasher, Italian tile floors, Carrara quartz counters and custom cabinets with slow-close drawers. A delightful powder room with Carrara marble vanity sink and expansive wall mirror ends this level.



The wide, light-filled staircase with open-banister wrought-iron railing ascends to the upper level landing with hallway and the home's private living quarters. The terrific master bedroom suite with gorgeous views from the Pacific Ocean to the Marin Headlands features a decorative balcony with views of hills and trees and a great en-suite marble tile bath with shower over tub. Two additional bedrooms – one with garden and water views – and a second full bath with large walk-in shower and a vanity sink with medicine chest end this floor. The lower level includes a sizable fourth bedroom/home office with tremendous walk-in closet, a third full marble tile bath with shower over tub, a fantastic family room with wet-bar, refrigerator, wine cooler and access to the yard, and a convenient laundry room with LG washer/Dryer and utility sink. The impressive walk-out landscaped backyard with two decks, enormous patio, sweeping lawn, mature fan palm, towering redwood tree and built-in planter boxes with established bamboo completes this truly special home!

Main Features

- ◆ 4 bedrooms
- ◆ 3 1/2 baths
- ◆ Formal living room
- ◆ Formal dining room
- ◆ Gas fireplace
- ◆ Hardwood floors
- ◆ Plantation shutters
- ◆ Gourmet kitchen
- ◆ Huge walk-in pantry
- ◆ Family room with wet-bar
- ◆ Laundry room with washer & dryer
- ◆ 2 walk-out decks
- ◆ Marin Headlands & water views
- ◆ Level landscaped backyard
- ◆ Patio, built-in planter boxes
- ◆ Large parking garage & storage room



Offered at \$1,795,000