

Exclusively offered by:

Andrew Herrera II

Berkshire Hathaway HomeServices

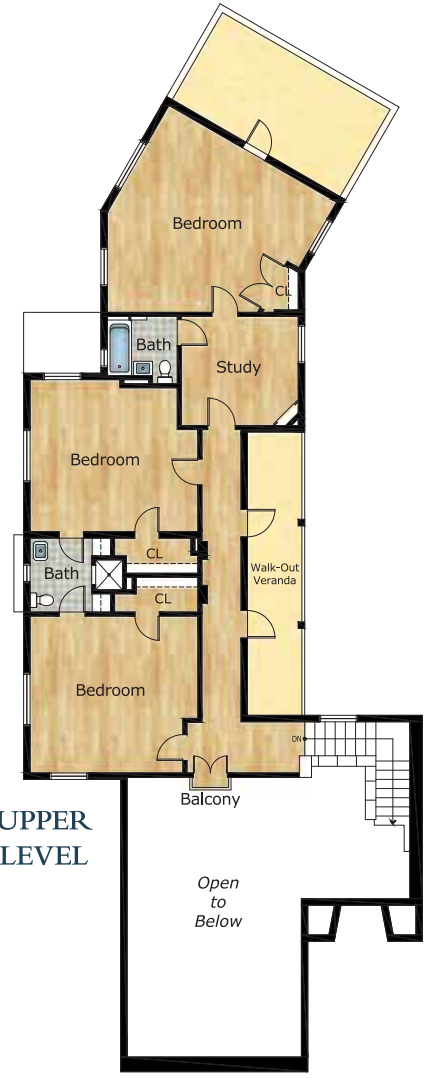
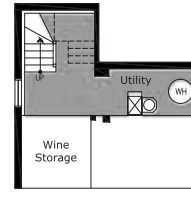
Top Producing Agent

(415) 564-9777

CalDRE # 01199229

Andrew@AndrewHerrera.com

www.AndrewHerrera.com



BERKSHIRE HATHAWAY HOMESERVICES | FRANCISCAN PROPERTIES SAN FRANCISCO, CA

©2025 BHH Affiliates, LLC. An independently owned and operated franchisee of BHH Affiliates, LLC. Berkshire Hathaway HomeServices and the Berkshire Hathaway HomeServices symbol are registered service marks of Columbia Insurance Company, a Berkshire Hathaway affiliate. Equal Housing Opportunity.

Andrew Herrera II presents...



235 Lansdale Avenue
- SHERWOOD FOREST -



Sherwood Forest Monumental Spanish Colonial Revival Pacific Ocean View Home!

This splendid Mission Style architectural masterpiece with quintessential red terracotta tile roof, white stucco walls and decorative wrought-iron window treatments built in 1936 was designed by renowned San Francisco architect Martin Rist and is beautifully situated on a sensational, prime corner lot in the heart of the neighborhood! The spectacular, stone-walled garden entrance with flagstone staircase leads to a notable arched doorway and into the breathtaking foyer with center hall floor plan, vaulted open-beam ceiling, grand staircase with period tiled bannisters, Moroccan chandelier, display niche and convenient coat and cloak closets. The phenomenal sunken formal living room with stunning hand-hewn, open-beam ceiling and glorious balcony above boasts a massive wood-burning fireplace with hand-carved cornice, huge picture window with views to the Pacific Ocean, French doors, original wrought-iron wall sconces, built-in alcoves and gorgeous random-plank hardwood floors. The exquisite, light-filled banquet-size formal dining room with superb, intricately designed wood and open-beam ceiling, double doors, decorative outdoor balcony, ocean views and French doors that open to the tranquil courtyard is perfect for entertaining! The fabulous updated kitchen with adjacent breakfast room, great butler's pantry with pull-out drawers, large separate laundry room and side pantry showcases all ZLINE stainless-steel appliances including a six-burner gas range, dishwasher and refrigerator, Monte Carlo quartzite counters, painted wood cabinets, recessed lighting, French doors that open to the lush garden and sweeping views from the Pacific Ocean to the Golden Gate Bridge to Sutro Tower and Twin Peaks.



The impressive, sumptuous master suite with vintage tile bathroom, coke-bottle glass windows, two dressing rooms and awesome views to the Pacific Ocean, a "speakeasy" with built-in wet bar, glassware shelving, porthole window and ocean views, a charming powder room with amber stained-glass window and a terrific guest suite with private full bath finish this floor. The majestic, arched staircase with open-beam ceiling and iconic nautical-themed leaded stained-glass window ascends to the upper level with spacious landing and dramatic "Juliet" balcony that overlooks the remarkable living room. An expansive "picture gallery" hallway with two eight-paned glass doors that open to the huge walk-out veranda with a bird's-eye view of the courtyard leads to three bedrooms – all with big closets and picturesque views from the Pacific Ocean to the Marin Headlands – two full baths and a wonderful study with handsome built-in corner cabinet. The extraordinary, park-like landscaped backyard with magnificent clubhouse/entertainment room, covered outdoor dining terrace with built-in barbecue, enormous stone patio, classic fountain, built-in deck with comfortable seating and a variety of mature, colorful plants and trees completes this truly special legacy home!

Features

- ◆ 5 spacious bedrooms
- ◆ 4 1/2 baths
- ◆ Sunken formal living room
- ◆ Banquet-size formal dining room
- ◆ Massive wood-burning fireplace
- ◆ Vaulted open-beam ceilings
- ◆ Random-plank hardwood floors
- ◆ Coke-bottle and stained-glass windows
- ◆ Original wrought-iron wall sconces
- ◆ Updated kitchen, butler's pantry
- ◆ Separate breakfast and laundry rooms
- ◆ Study with built-in corner cabinet
- ◆ Speakeasy with wet bar
- ◆ Clubhouse/entertainment room
- ◆ Wine cellar, built-in shelving
- ◆ Sweeping Pacific Ocean views
- ◆ Golden Gate Bridge and Twin Peaks views
- ◆ Walk-out veranda, tiled mural
- ◆ Park-like landscaped backyard, fountain
- ◆ Enormous stone patio, deck, dog run
- ◆ Outdoor dining terrace, built-in barbecue
- ◆ Ample storage
- ◆ 3-car side-by-side parking garage

Offered at \$5,895,000

