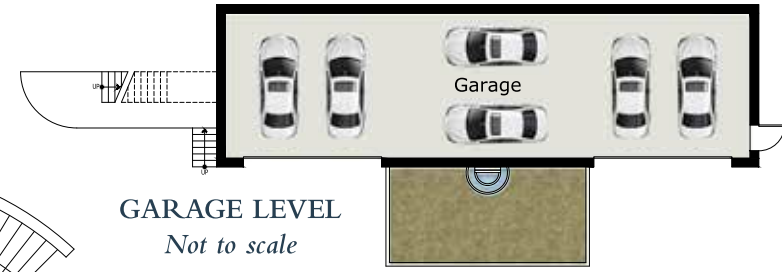
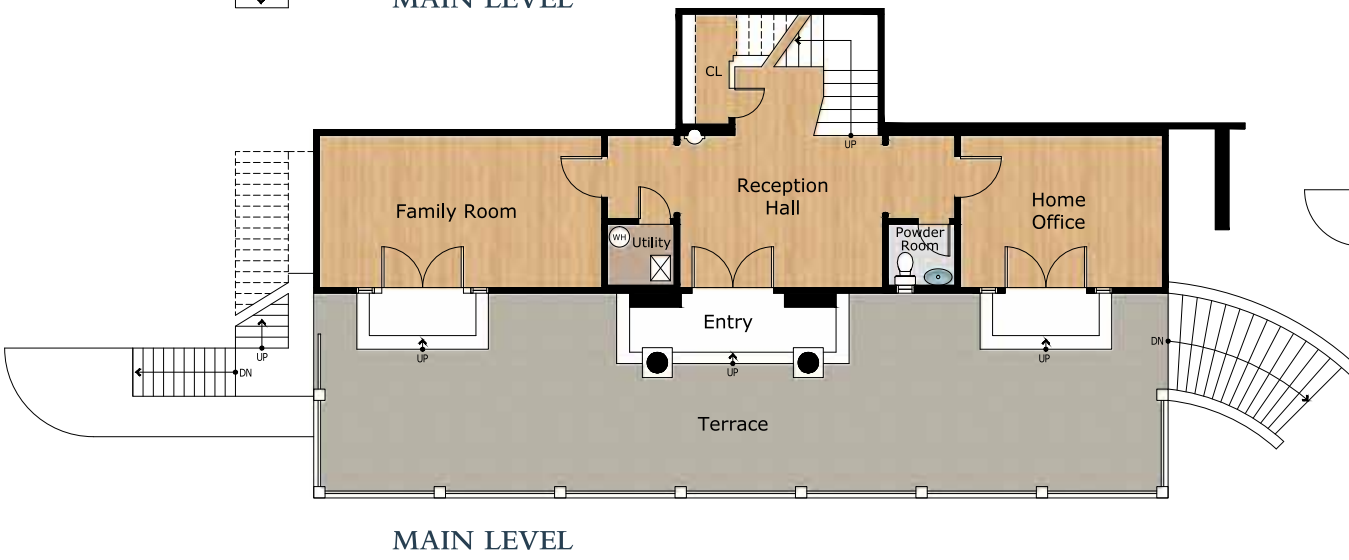
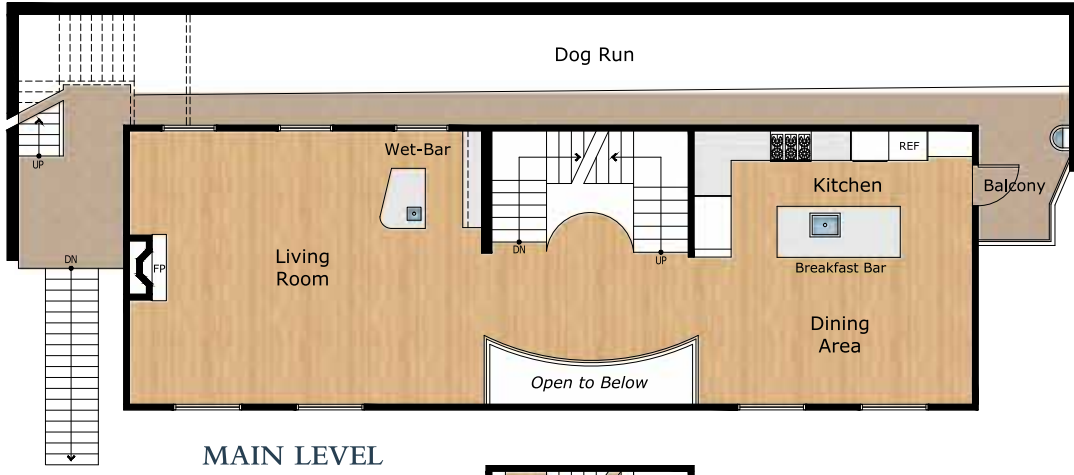


Exclusively offered by:  
**Andrew Herrera II**  
 Berkshire Hathaway Homeservices'  
 Top Producing Agent  
 (415) 564-9777  
 CalBRE # 01199229  
 Andrew@AndrewHerrera.com  
 www.AndrewHerrera.com



BERKSHIRE HATHAWAY  
 HomeServices  
 LUXURY  
*Collection*  
 677 Portola Drive  
 San Francisco, CA 94127

©2023 BHH Affiliates, LLC. An independently owned and operated franchisee of BHH Affiliates, LLC. Berkshire Hathaway HomeServices and the Berkshire Hathaway HomeServices symbol are registered service marks of Columbia Insurance Company, a Berkshire Hathaway affiliate. Equal Housing Opportunity.

Andrew Herrera II presents...



75 Miraloma Drive  
 -SHERWOOD FOREST-





**Sherwood Forest Magnificent Italian Mediterranean Villa!**

This grand Italian Mediterranean, Tuscan-style home built in 2004 is proudly situated in the heart of the neighborhood close to public transportation! An elegant landscaped garden entrance with inviting circular tiled staircase leads to a large landing with impressive double door columned entry and into a dramatic two-story reception hall with archways, mosaic tile floor, stunning chandelier and entry coat closet. This floor includes a family room with French doors that open to a walk-out patio, a wonderful home office and a convenient "hotel-like" powder room. The spectacular open-banister wrought-iron staircase ascends to the upper level landing with picture window, social rooms and phenomenal views to the Pacific Ocean. The remarkable formal living room boasts an imposing gas fireplace with granite hearth and stylized stenciled surround, two picture windows with sweeping views from the Marin Headlands to the Pacific Ocean, a splendid wet-bar with fridge and glassware cabinets, recessed lighting and classy engineered wood floors. The large, open dining area with striking light fixture and arched windows with views from Edgell Mountain to the Pacific Ocean is perfect for entertaining!



The beautiful gourmet kitchen with recessed lighting showcases a marvelous work-island with double stainless steel sink, breakfast bar and three pendant drop lights, all stainless steel appliances including a Wolf six-burner gas range with Wind Crest hood, Sub-Zero refrigerator and a Fisher & Paykel dishwasher, granite counters, custom cabinets, pantry with slide-out drawers and a built-in menu planning desk. This level's attractive staircase with gigantic overhead skylight leads to the top level with spacious landing, expansive hallway and the home's private living quarters. The fabulous master suite which enjoys amazing sunsets and panoramic views of hills and trees, the Farallon Islands and the Pacific Ocean features two huge walk-in custom closets and a terrific en-suite marble tile bath with dual-vanity sink, "Jacuzzi" tub and separate walk-in shower. Three additional good-size bedrooms – one with an en-suite bath, big walk-in closet and massive window with incredible views – an additional full bath and a snazzy walk-in laundry closet end this floor. The enormous outdoor tiled terrace, walk-out balcony with decorative fountain, extensive dog run, tradesman's side entrance and six car parking garage complete this truly special home!

**Main Features**

- ◆ 4 bedrooms
- ◆ 3 1/2 baths
- ◆ Reception hall
- ◆ Formal living room
- ◆ Gas fireplace
- ◆ Wet-bar with fridge
- ◆ Open dining area
- ◆ Gourmet kitchen
- ◆ Breakfast bar
- ◆ Family room
- ◆ Home office
- ◆ Engineered wood floors
- ◆ Recessed lighting
- ◆ Laundry room
- ◆ Sweeping Pacific Ocean views
- ◆ Enormous terrace/patio
- ◆ Walk-out balcony with fountain
- ◆ 6-car parking garage

*Offered at \$2,995,000*

